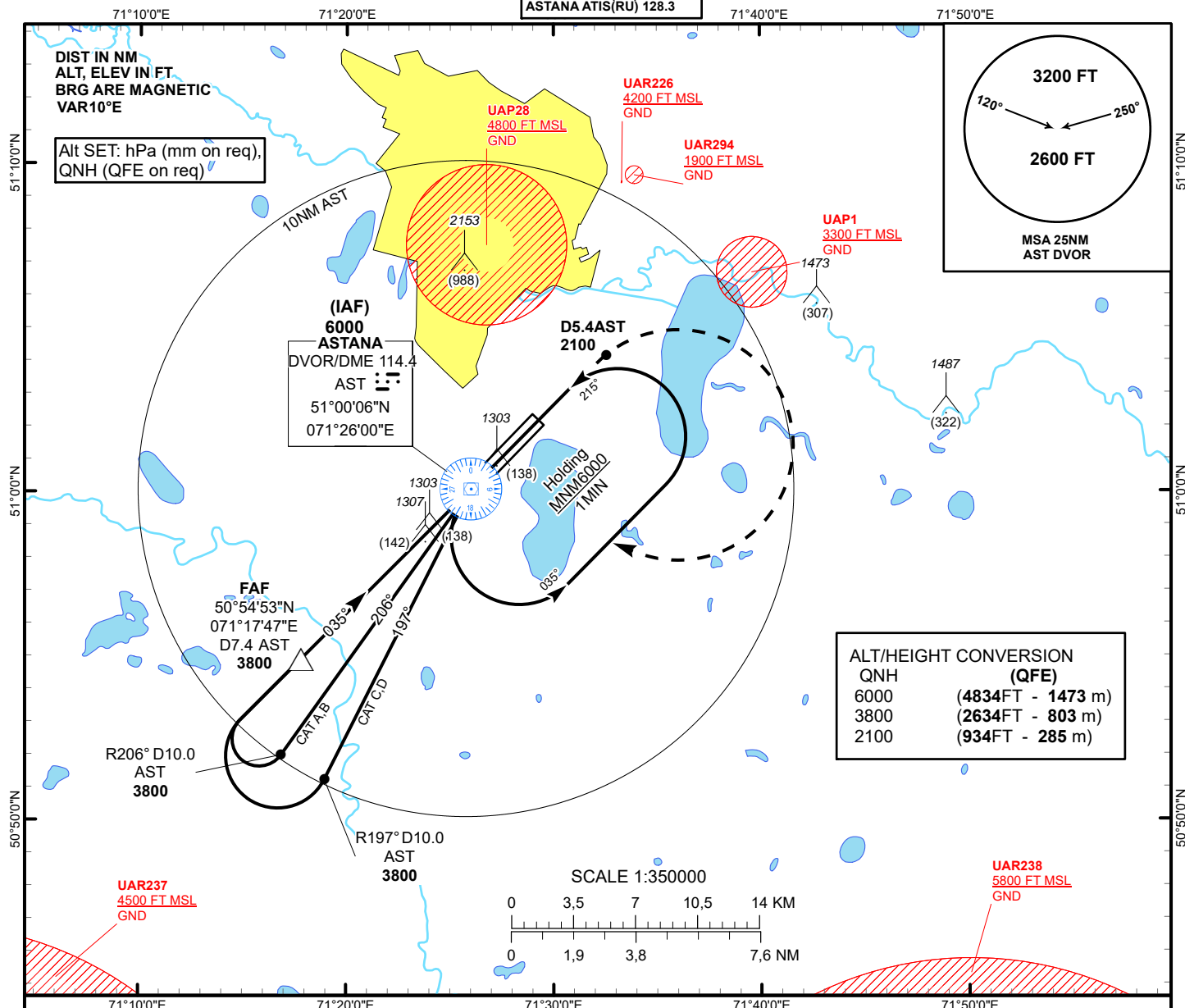


INSTRUMENT
APPROACH
CHART - ICAO

AERODROME ELEV **1166FT**
HEIGHTS RELATED TO
AD ELEV

ASTANA TOWER 135.5
ASTANA APPROACH 124.6
ASTANA RADAR 120.7
ASTANA GROUND 119.6
ASTANA ATIS(EN) 129.5
ASTANA ATIS(RU) 128.3

ASTANA/NURSULTAN NAZARBAYEV
INTERNATIONAL AIRPORT
VOR/DME RWY 04



TRANSITION ALT
10000

FAF
D7.4 AST

IAF
6000

MISSED APPROACH

Climb on track 035° to 2100 or above
outbound to D5.4 AST, turn RIGHT
to AST. Climb initially to 3800
then as directed by ATC.
RADIO FAILURE: in case
of RCF climb to 6000 to AST and join
to holding pattern. Missed approach
turn speed limited to 240 kt IAS maximum.

DVOR/DME
AST
MAPt

PDG 5.2% (3.0°)
035°

ELEV 1165
THR RWY 04

CHANGE: Tower FREQ, MSA.

Aircraft Category		A	B	C	D	DIST to THR	8.2	8.0	7.0	6.0	5.0	4.0	3.0	2.0	1.0
Straight-in Approach OCA/H						DME AST	7.4	7.2	6.2	5.2	4.2	3.2	2.2	1.2	0.2
	DVOR/DME	1560(390)	1560(390)	1560(390)	1560(390)	ALTITUDE	3800	3761	3443	3124	2806	2488	2169	1851	1532
						HEIGHT	(2634)	(2595)	(2277)	(1958)	(1640)	(1322)	(1003)	(685)	(366)
Aerodrome Operating Minima MDH ft x RVR(CMV)		DVOR/DME				GS	Kt	80	100	120	140	160	180		
						FAF-MAPt (7.4)	min:sec	5:33	4:26	3:42	3:10	2:47	2:28		
						Rate of descent(5.2%)	ft/min	420	530	630	740	840	950		

ASTANA
VOR/DME

AERONAUTICAL DATA TABULATION

VOR approach to RWY04 from AST DVOR/DME	
Fix/point	Coordinates
AST DVOR/DME(IAF)	51° 00' 05.6"N 071° 26' 00.4"E
(FAF) D7.4 AST	50° 54' 53.4"N 071° 17' 47.1"E
THR RWY 04	51° 00' 40.87"N 071° 26' 55.41"E
Final approach descent angle is 3°	